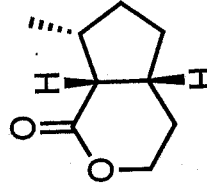
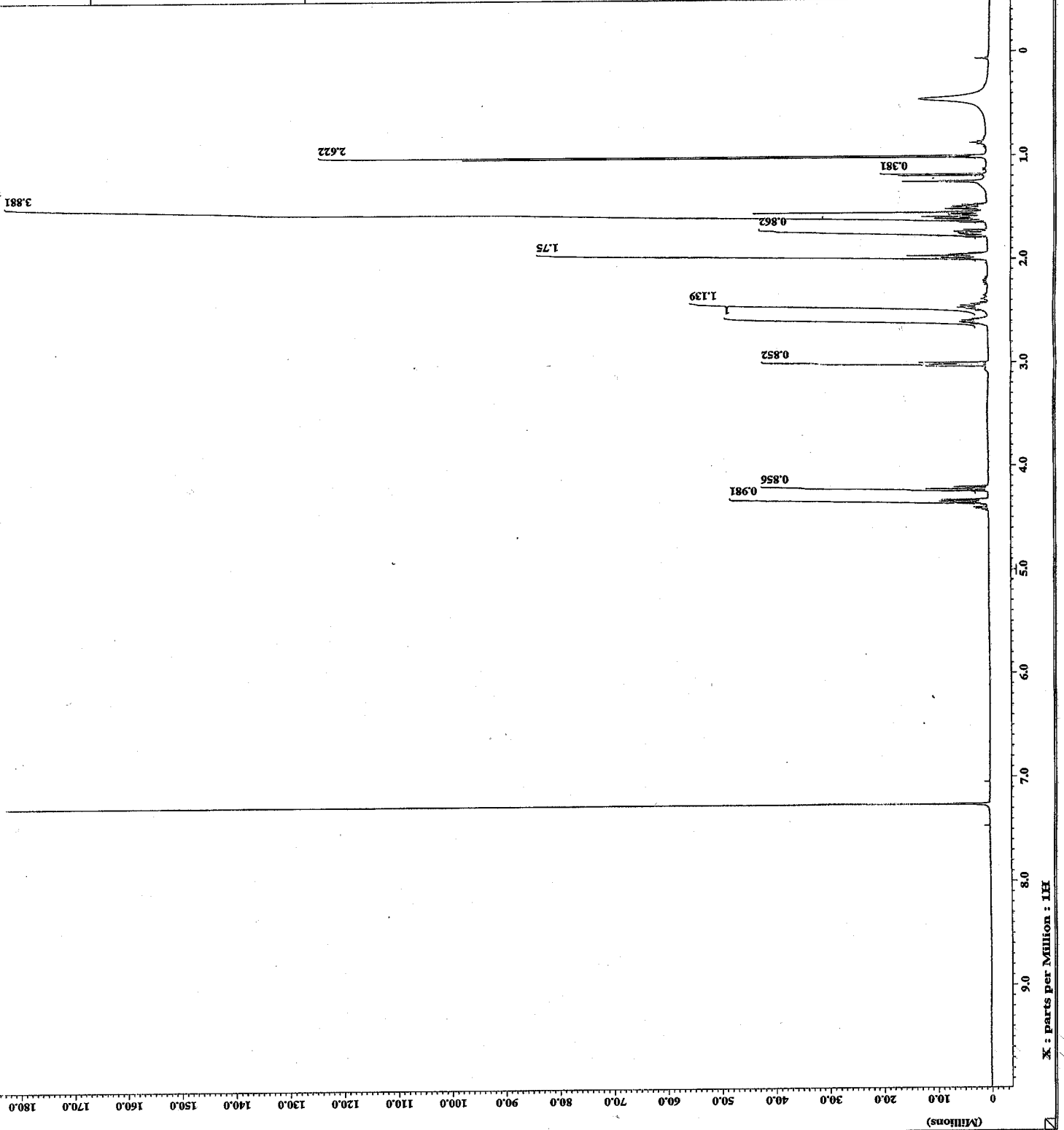


----- PROCESSING PARAMETERS -----
 Gd_Balance = 1.000000
 SFO = 0.2 [Hz]
 MachinePhase = 0.000000
 PPM = 0.000000
 Reference : 7.252 [ppm] : 7.26 [ppm]

----- ACQUISITION PARAMETERS -----
 File Name = MS-04-0101.4
 Author =
 Sample ID = S4787901
 Content = Single Pulse Experiment
 Creation Date = 20-NOV-2009 14:42:31
 Revision Date = 22-MAR-2010 09:30:48
 Spec Site = ECP500
 Spec Type = DELTA_RMR
 Data Format = 1D COMPLEX
 Data Size = 16384
 Dim 1 Size = 16384
 Dim 2 Size = 16384
 Dim Units = [ppm]
 Scans = 32
 X_domain = 1H
 X_offset = 5 [ppm]
 X_freq = 500.16241602 [MHz]
 X_sweep = 7.50750751 [kHz]
 Solvent = CDCl3
 Temp = 23.2 [C]
 Recvz_gain = 30
 Field_strength = 11.7473572 [T]
 Filter_mode = SUPPRESSOR
 Filter_width = 3.77119396 [kHz]



onikulactone (1)



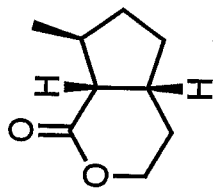
exp3 s2pul

SAMPLE SPECIAL
 date Nov 26 2009 temp not used
 solvent cdcl3 gain not used
 file /home/walkup/- spin 16
 vnmrsgs/data/Toyot-hat 0.008
 a_Lab/saaki/ms-04-- pw90 14.000
 049b.fid alfa 10.000

ACQUISITION FLAGS
 sw 6410.3 il n
 at 2.500 in n
 np 44872 sp y
 eb 4000 hs nn
 bs 32 PROCESSING
 d1 1.500 lb 0.20
 nt 16 fa not used
 ct 16 DISPLAY

TRANSMITTER sp -200.1
 tn HI wp 3998.4
 sfrq 399.855 rf1 3700.3
 tof 399.9 rfp 2902.9
 tpwr 59 rp 132.6
 pw 7.000 lp 2.2

DECOUPLER PLOT
 dh Cl3 wc 370
 def 0 ac 0
 dn nnn vs 1169
 dnm c th 243
 dpwr 41 ai ph
 dmf 29412



mitsugashiwalactone (2)

