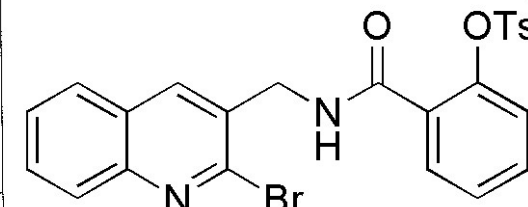
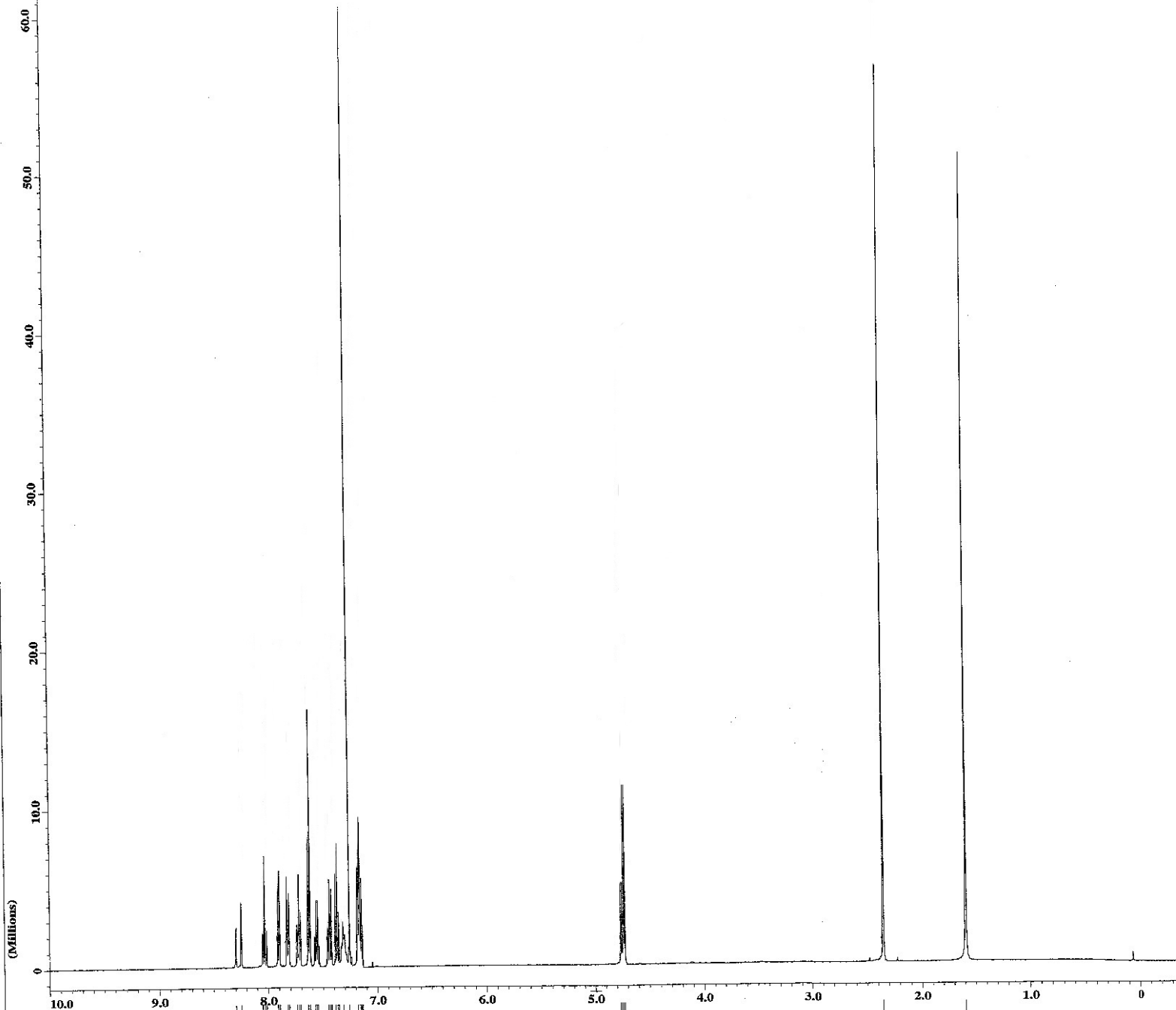


JEOL

----- PROCESSING PARAMETERS -----
dc_balance
sexp : 0.2 [Hz]
zft : 1
technique : phase
ppm

----- ACQUISITION PARAMETERS -----
File Name = id_spectrum.16
Author =
Sample ID = 09733125
Content = Single Pulse Experiment
Creation Date = 15-JUN-2011 03:06:57
Revision Date = 17-JUN-2011 20:27:15
Spec Site = ECP500
Spec Type = DELTA_NMR
Data Format = 1D_COMPLEX
Dimensions = X
Dim Title = 1H
Dim Size = 16384
Dim Units = [ppm]
Scans = 8
Mod_return = 1
X_domain = 1H
X_offset = 5 [ppm]
X_freq = 500.16241602 [MHz]
X_sweep = 7.50750751 [kHz]
Solvent = CHLOROFORM-D
Spin_get = 14 [Hz]
Temp_get = 21.8 [C]
Recvr_gain = 29
Field_strength = 11.7473579 [T]
Filter_mode = BUTTERWORTH
Filter_width = 3.75119936 [kHz]



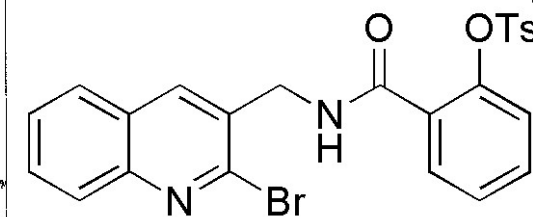
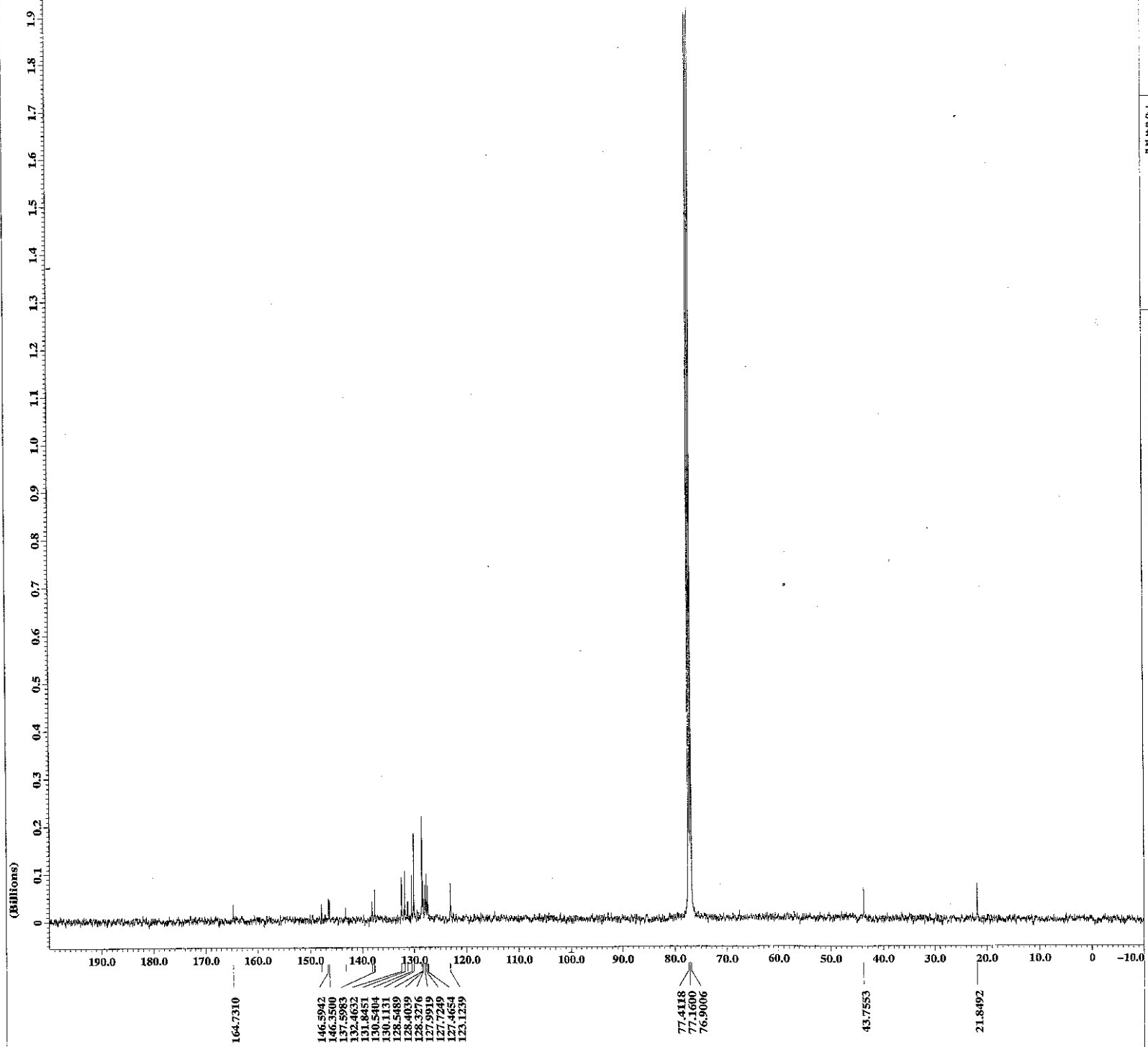
3c

¹H NMR

X : parts per Million : 1H

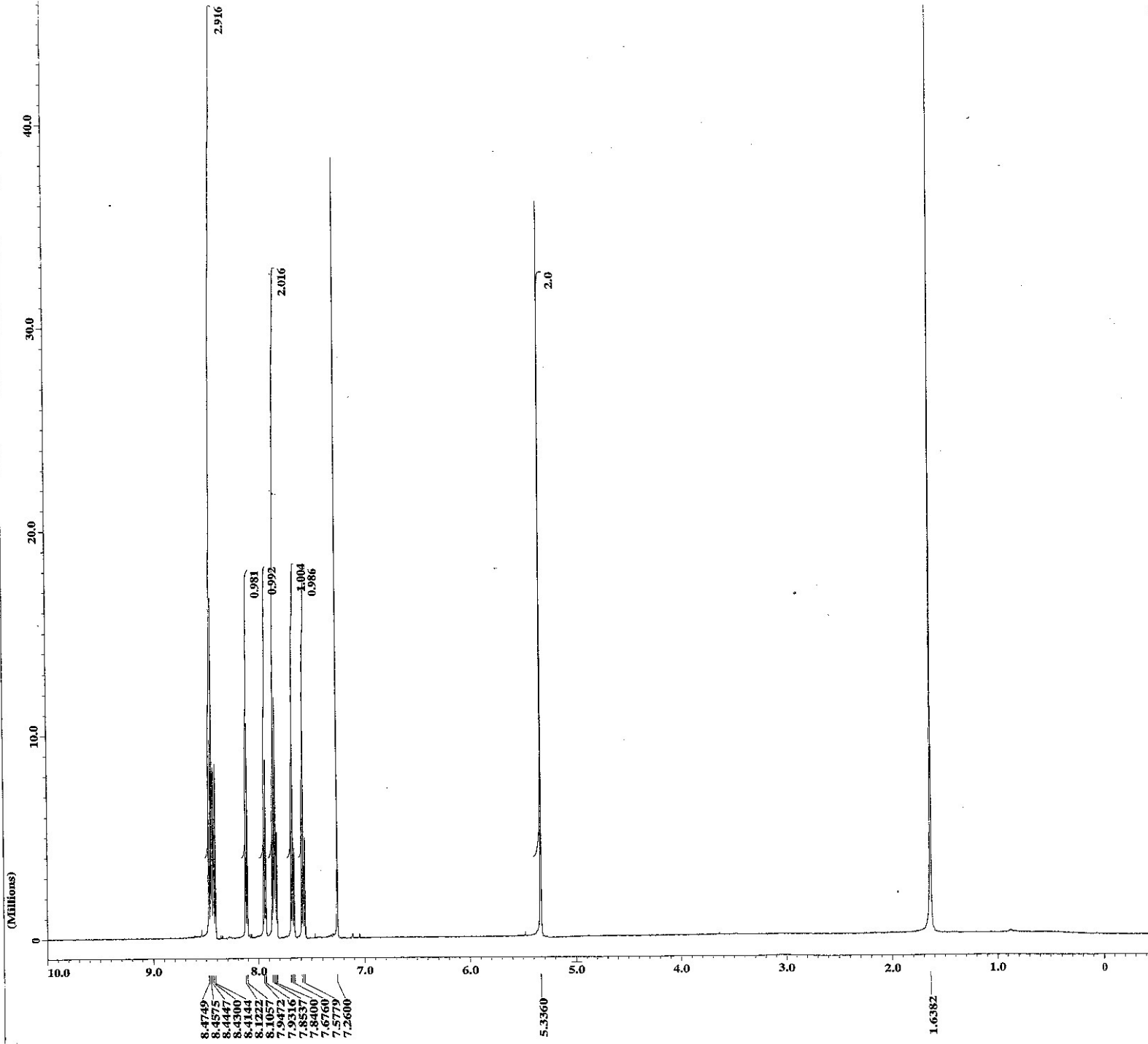
----- PROCESSING PARAMETERS -----
 ac_balance
 sump : 5[Hz]
 zft : 1
 ppm
 machinephase

----- ACQUISITION PARAMETERS -----
 File Name = 1d_13c_spectrum_3
 Author =
 Sample ID = S#583262
 Content = Single Pulse with Broad
 Creation Date = 15-JUN-2011 00:38:35
 Revision Date = 17-JUN-2011 18:04:25
 Spec Site = ECP500
 Spec Type = DELTA_NMR
 Data Format = 1D COMPLEX
 Dimensions = X
 Dim Title = 13C
 Dim Size = 32768
 Dim Units = [ppm]
 Scans = 3000
 Mod_return = 1
 X_domain = 13C
 X_offset = 100[ppm]
 X_freq = 125.77787547 [MHz]
 X_sweep = 31.44654088 [kHz]
 Solvent = CHLOROFORM-D
 Spin_pac = 16[Hz]
 Temp_set = 24.9 [dC]
 Recvz_gain = 30
 Field_strength = 11.7473579 [T]
 Filter_mode = BUTTERWORTH
 Filter_width = 15.72056221 [kHz]



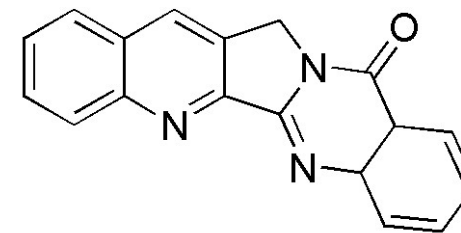
3c

¹³C NMR



----- PROCESSING PARAMETERS -----
 dc_balance =
 exp : 0.2 [Hz]
 f1 : 1
 machinephase
 ppm

----- ACQUISITION PARAMETERS -----
 File Name = Id_spectrum.15
 Author =
 Sample ID = S#659535
 Content = Single Pulse Experiment
 Creation Date = 15-JUN-2011 01:04:25
 Revision Date = 17-JUN-2011 18:24:09
 Spec Site = ECP500
 Spec Type = DELTA NMR
 Data Format = 1D COMPLEX
 Dimensions = X
 Dim Title = 1H
 Dim Size = 16384
 Dim Units = [ppm]
 Scans = 8
 Mod_return = 1
 X Domain = 1H
 X_Offset = 5 [ppm]
 X_freq = 500.16241602 [MHz]
 X_sweep = 7.50750751 [kHz]
 Solvent = CHLOROFORM-D
 Spin_get = 16 [Hz]
 Temp_get = 22.4 [dC]
 Recvc_gain = 29
 Field_strength = 11.7473579 [T]
 Filter_mode = BUTTERWORTH
 Filter_width = 3.75119936 [kHz]



Luotonin A (2)

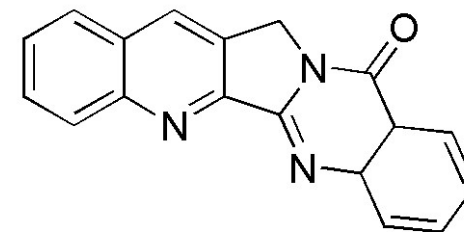
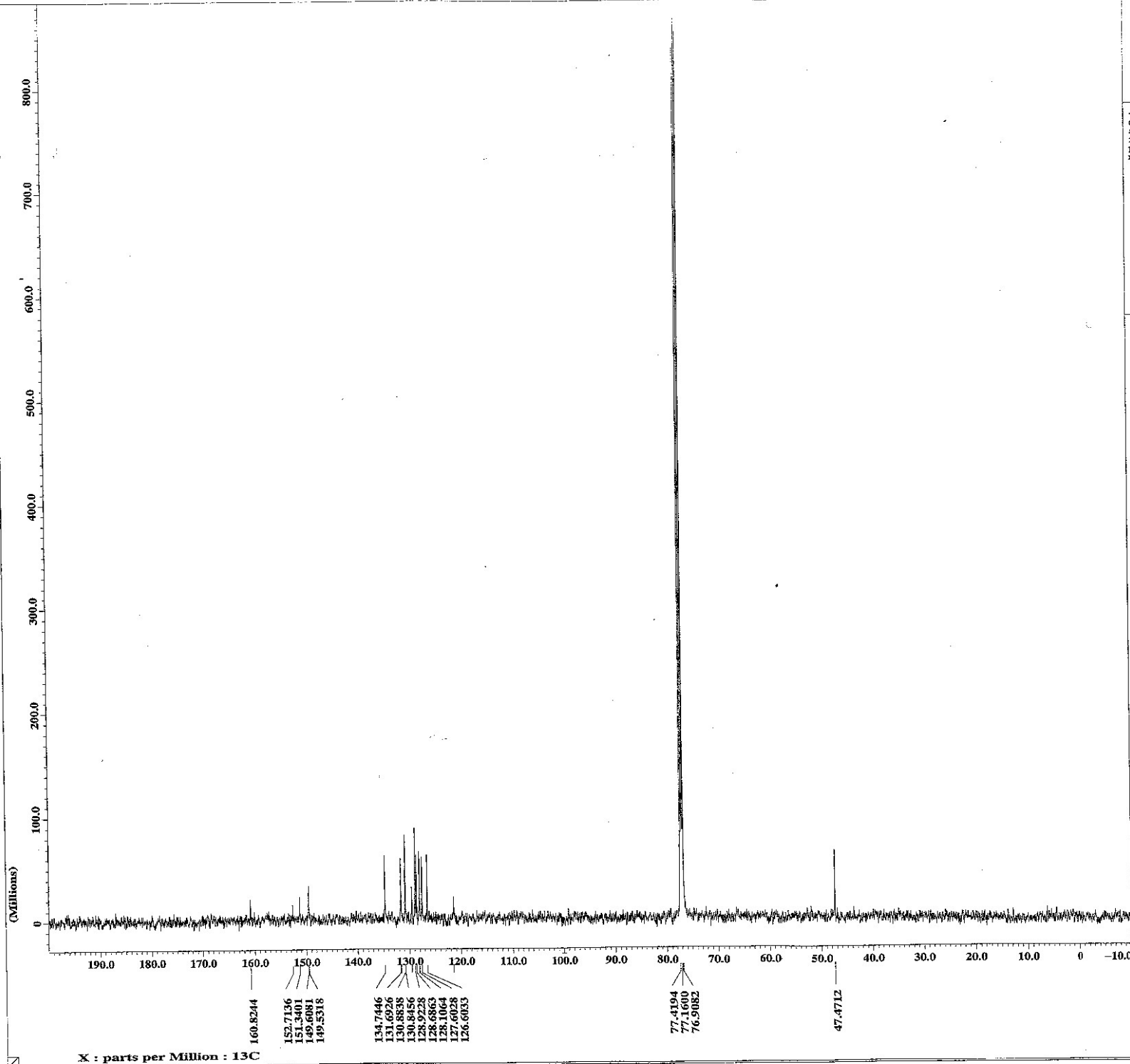
¹H NMR

----- PROCESSING PARAMETERS -----
 dc_balance
 aexp : 5 [Hz]
 fft : 1
 ppm
 machinephase

----- ACQUISITION PARAMETERS -----
 File Name = id_13c_spectrum_4
 Author =
 Sample ID = S#664902
 Content = Single Pulse with Broad
 Creation Date = 15-JUN-2011 01:59:31

 Revision Date = 17-JUN-2011 20:15:41
 Spec Site = ECR500

 Spec Type = DELTA_NMR
 Data Format = 1D COMPLEX
 Dimensions = 1
 Dim Title = 13C
 Dim Size = 32768
 Dim Units = [ppm]
 Scans = 1382
 Mod_return = 1
 X_domain = 13C
 X_offset = 100 [ppm]
 X_freq = 125.77787547 [MHz]
 X_sweep = 31.44654088 [kHz]
 Solvent = CHLOROFORM-D
 Spin_get = 14 [Hz]
 Ramp_get = 25.8 [dC]
 Recv_gain = 30
 Field_strength = 11.7473579 [T]
 Filter_mode = BUTTERWORTH
 Filter_width = 15.72066221 [kHz]



Luotonin A (2)
¹³C NMR