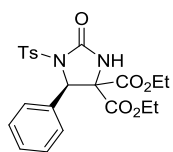
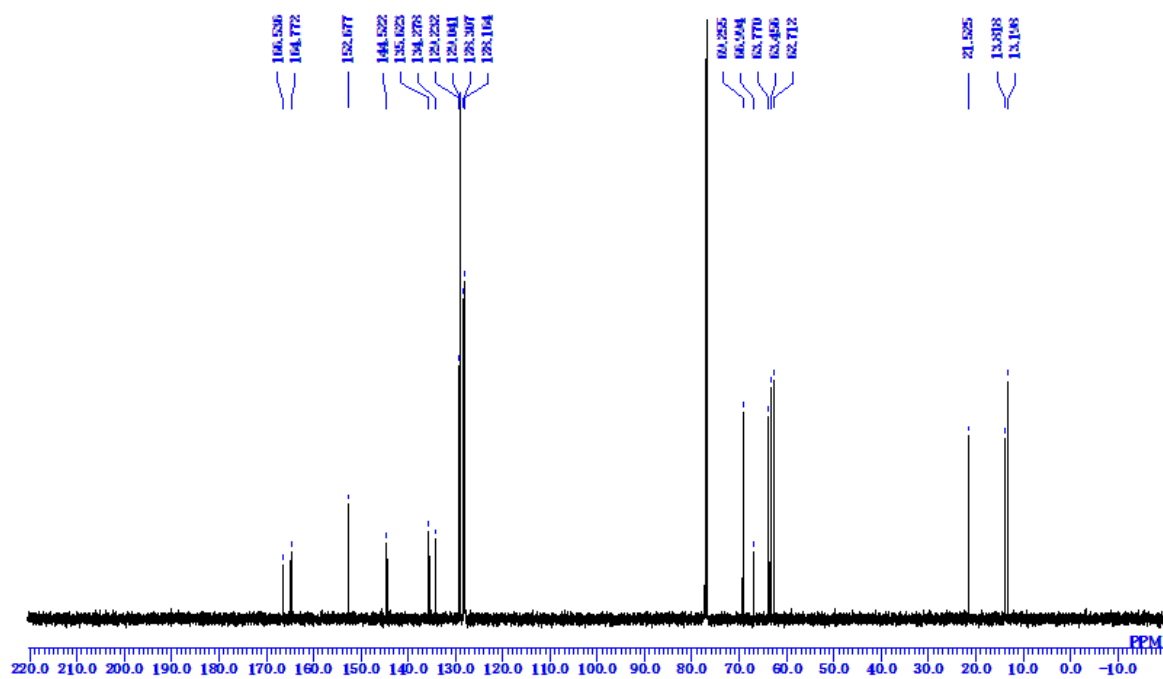
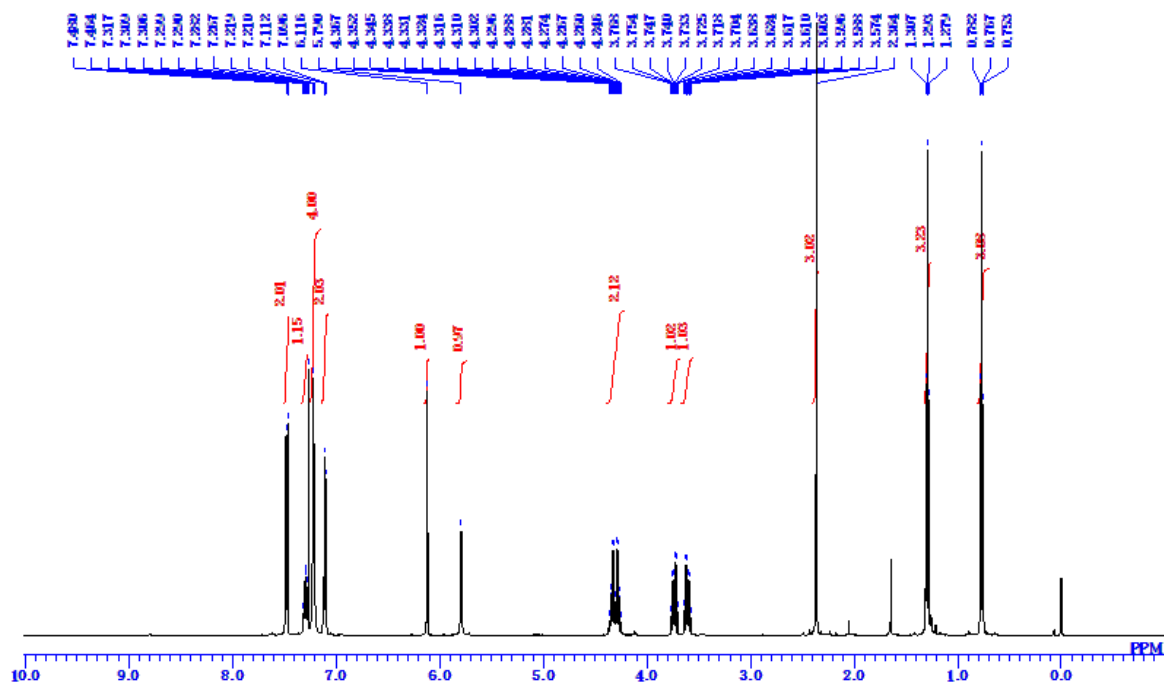
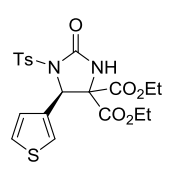
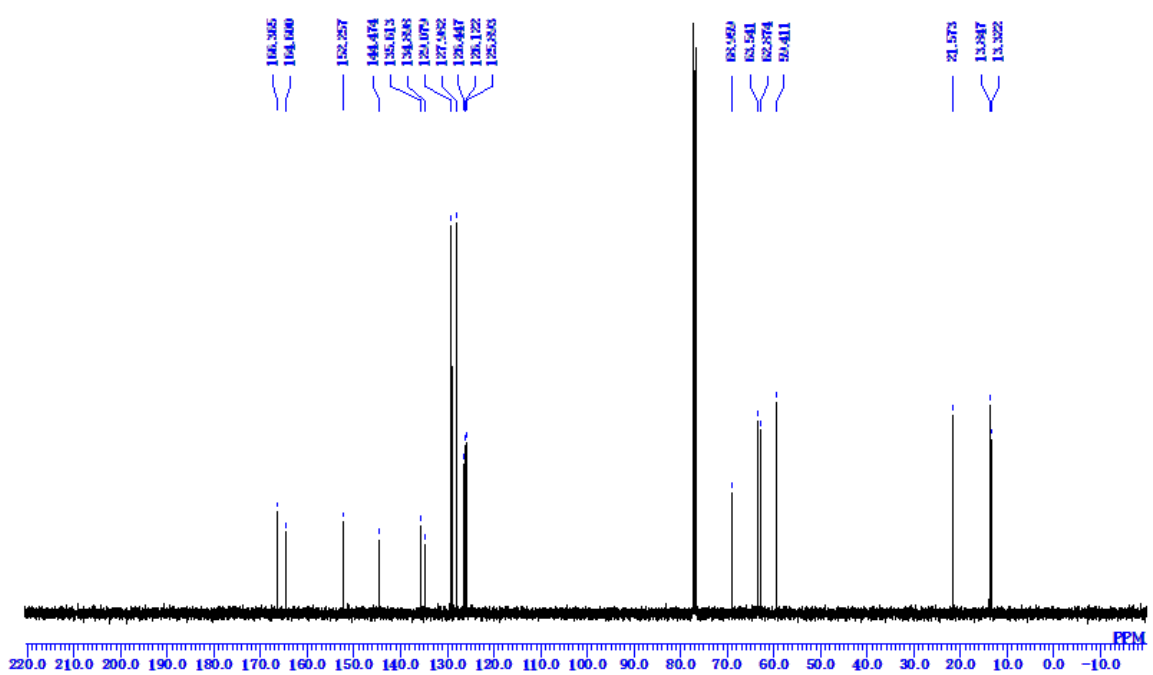
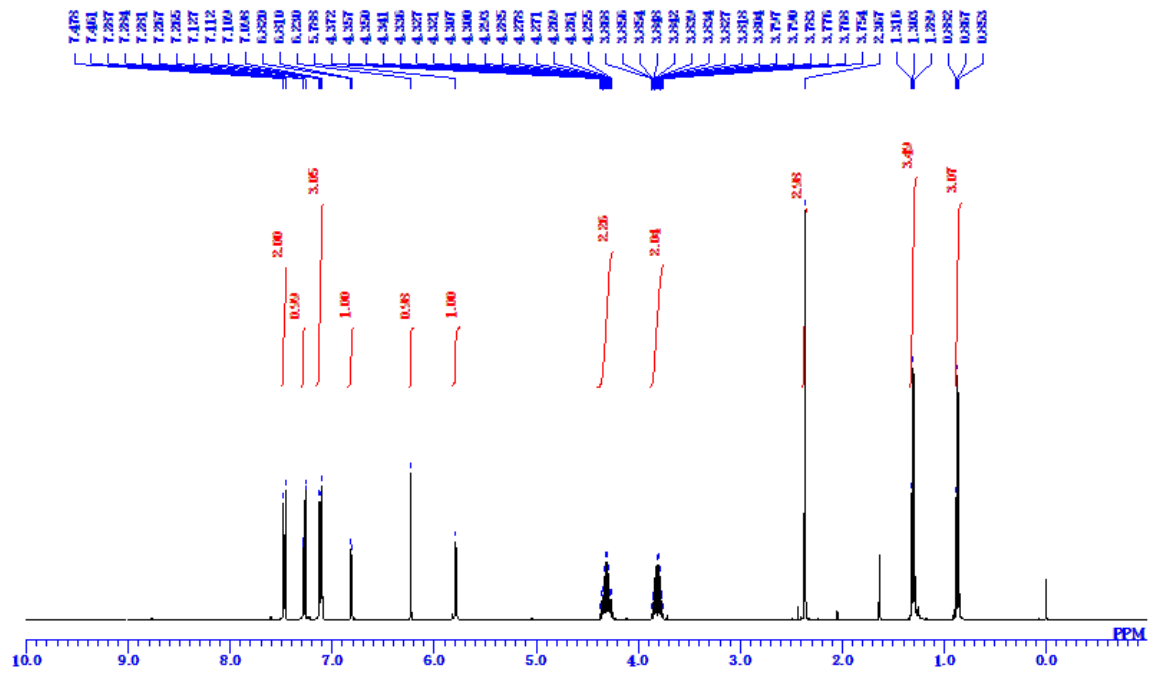
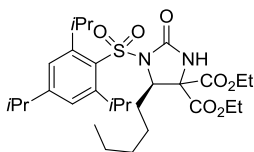
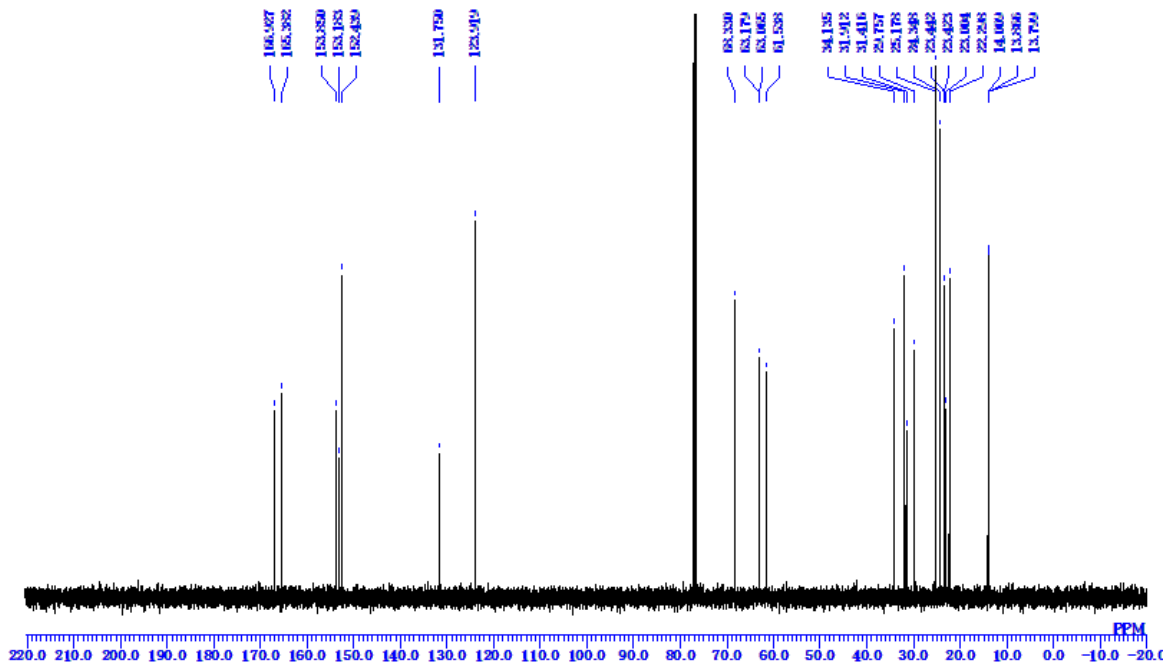
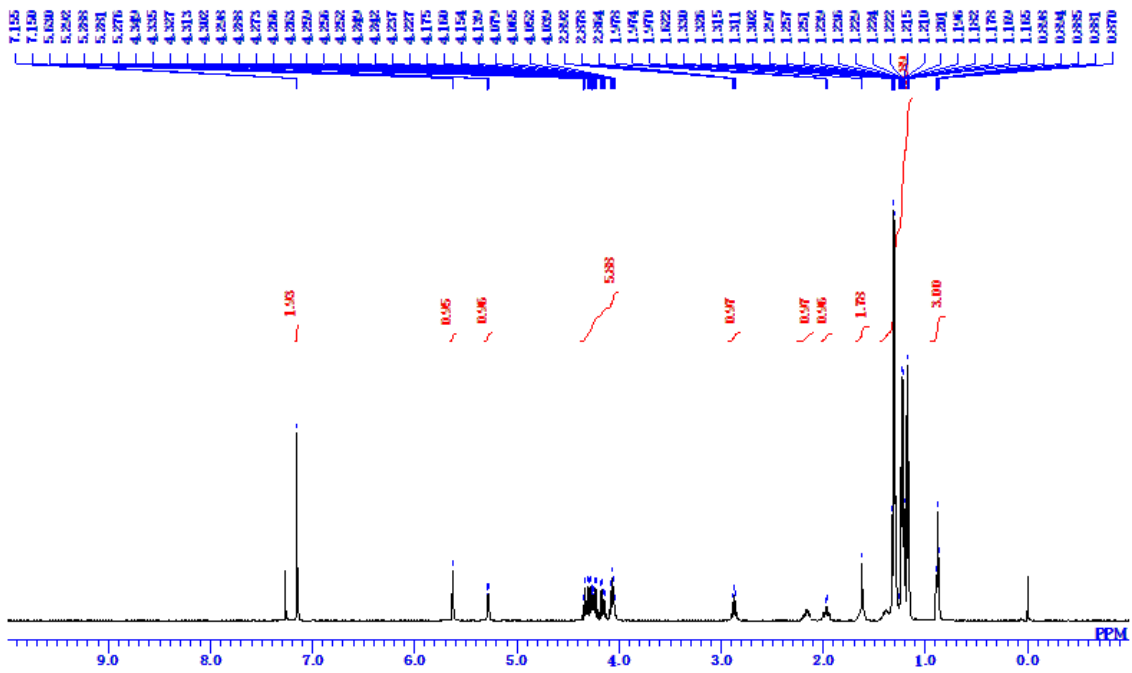


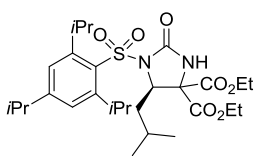
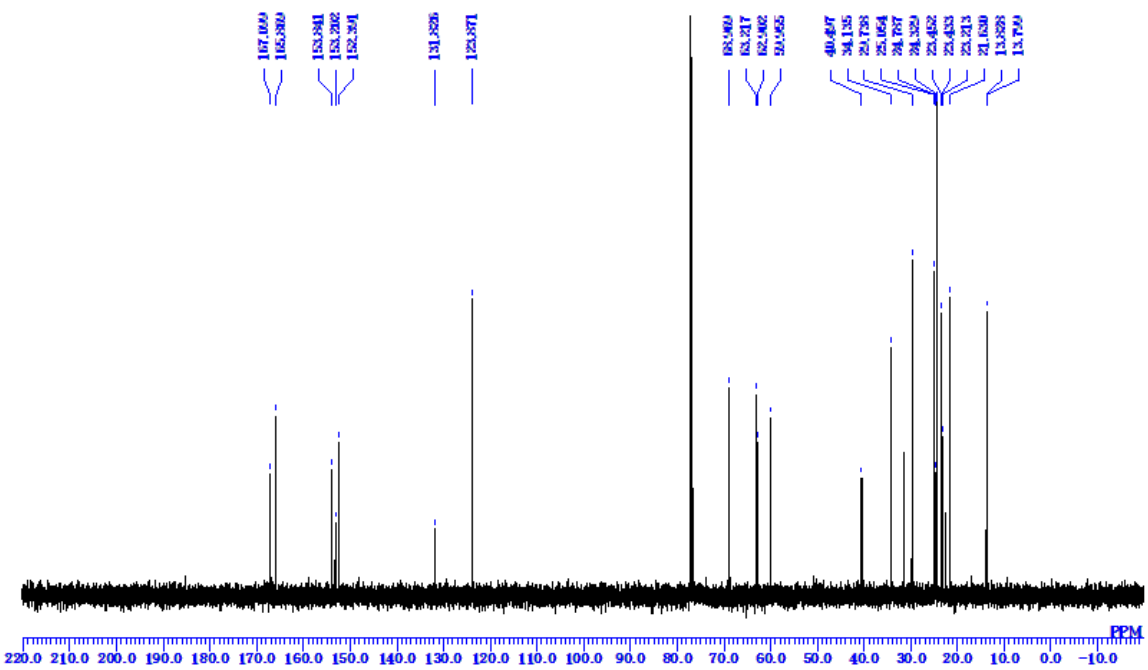
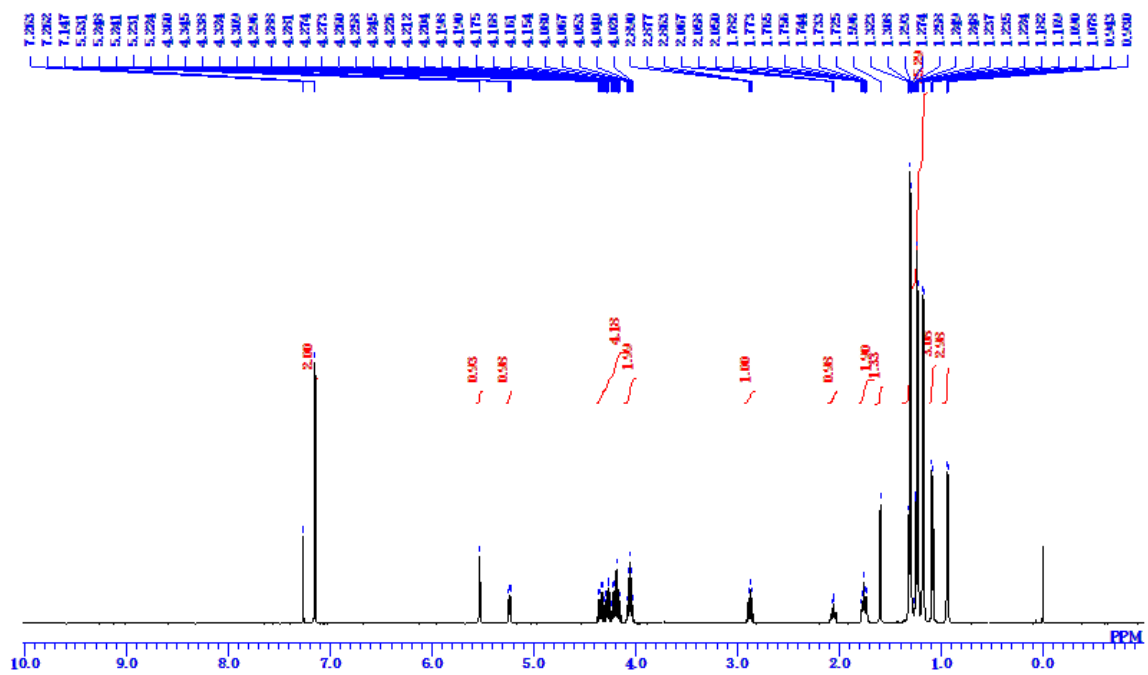
Supplementary Materials

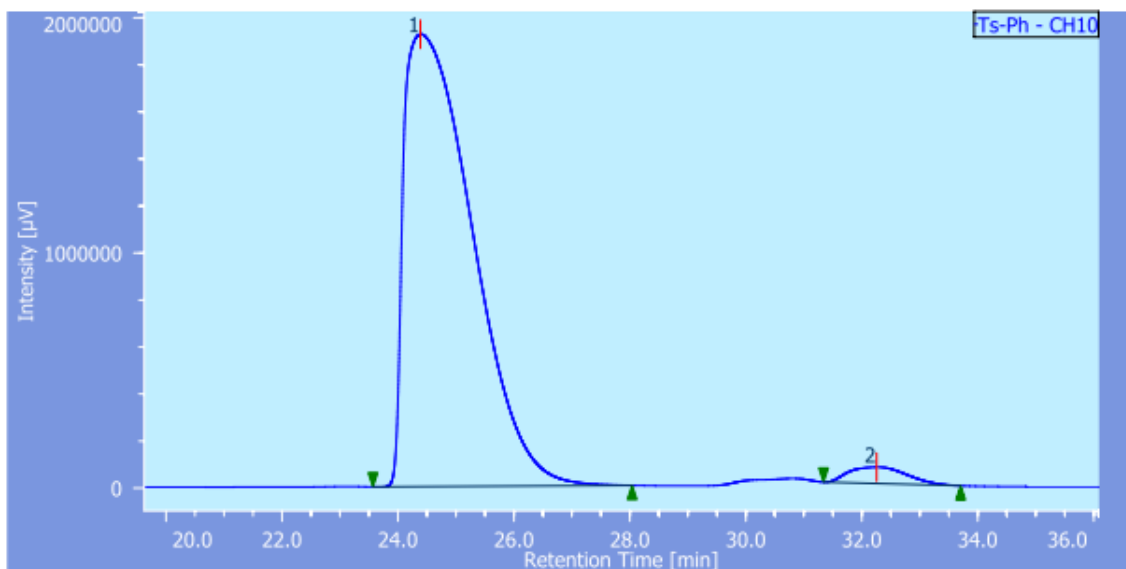
Copies of NMR and HPLC Charts for the Representative New Compounds









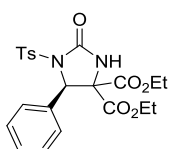


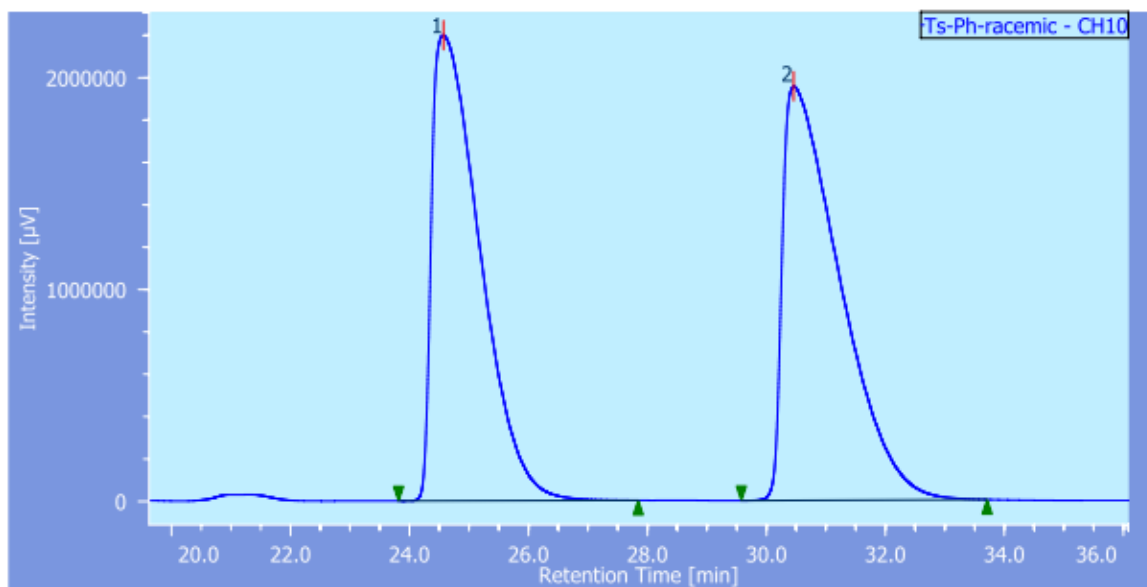
Chromatogram Info
 modification time 2016/08/30 17:27:09
 comment
 acquisition date 2013/12/24 11:59:26
 injection volume 5.00 [µL]
 sample# 1
 control method yoshida-Ts imines

Channel Info
 chromatogram name Ts-Ph-CH10

Peak Info

#	CH	tR [min]	Area [µV·sec]	Area (%)
1	10	24.387	158282028	97.035
2	10	32.253	4836668	2.965



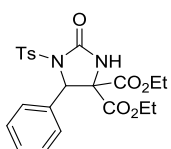


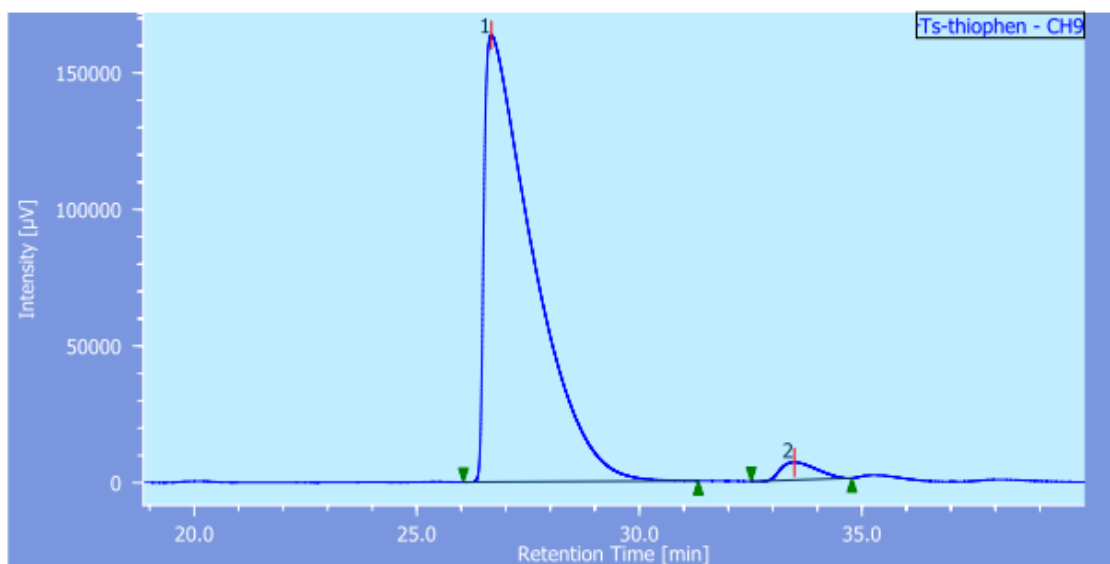
Chromatogram Info
 modification time 2016/08/30 17:28:15
 comment
 acquisition date 2013/11/15 16:46:08
 injection volume 5.00 [µL]
 sample# 6
 control method 90-0.5-11.15

Channel Info
 chromatogram name Ts-Ph-racemic-CH10

Peak Info

#	CH	tR [min]	Area [µV·sec]	Area (%)
1	10	24.572	123678374	48.581
2	10	30.457	130901024	51.419





Chromatogram Info

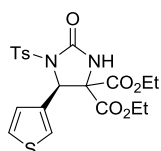
modification time 2016/08/30 17:30:49
 comment
 acquisition date 2014/02/18 20:50:20
 injection volume 5.00 [µL]
 sample# 5
 control method yoshida-Ts imines

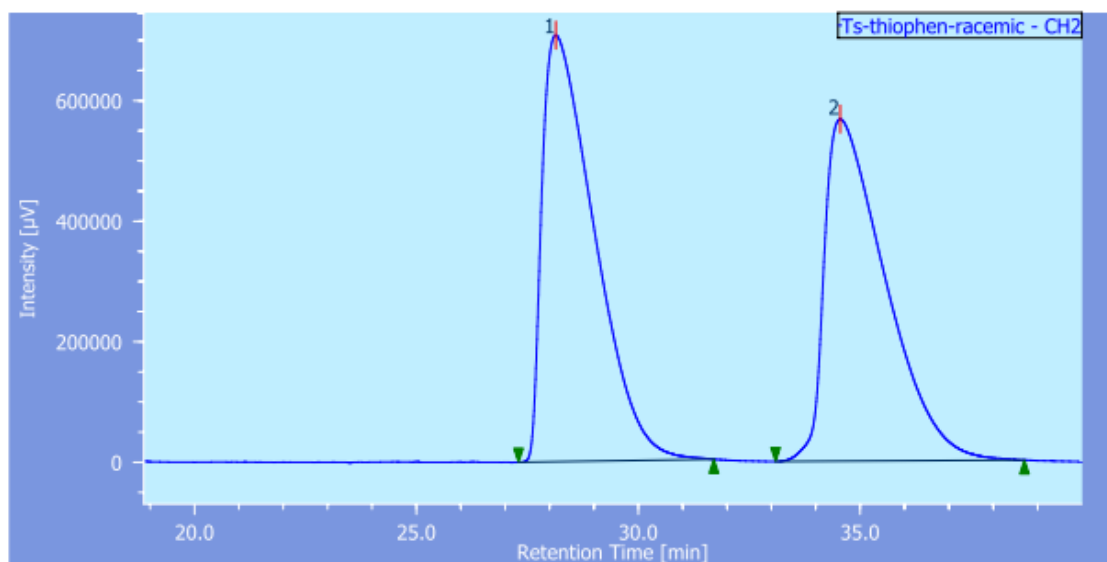
Channel Info

chromatogram name Ts-thiophen-CH9

Peak Info

#	CH	tR [min]	Area [µV·sec]	Area (%)
1	9	26.677	12406955	97.180
2	9	33.482	360089	2.820



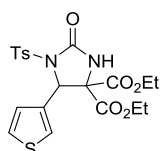


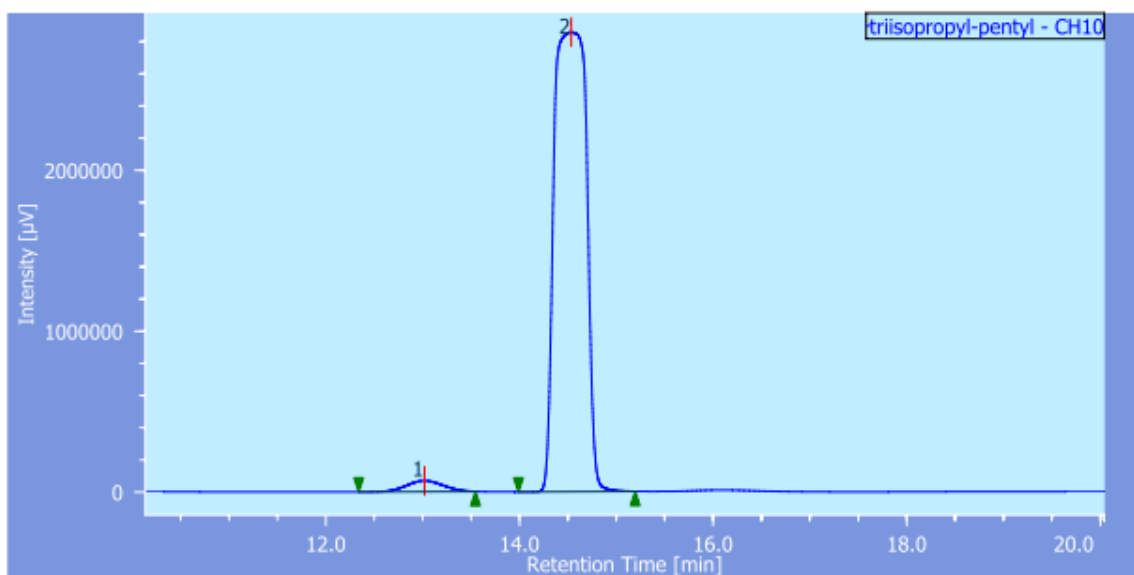
Chromatogram Info
 modification time 2016/08/30 17:32:20
 comment
 acquisition date 2014/01/21 21:13:32
 injection volume 5.00 [µL]
 sample# 2
 control method racemic products-0121

Channel Info
 chromatogram name Ts-thiophen-racemic-CH2

Peak Info

#	CH	tR [min]	Area [µV·sec]	Area (%)
1	2	28.142	57998581	51.645
2	2	34.550	54303593	48.355





Chromatogram Info

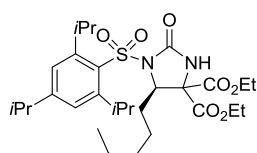
modification time 2016/08/30 17:34:14
 comment
 acquisition date 2014/04/18 20:23:44
 injection volume 5.00 [µL]
 sample# 2
 control method IC-95-1.0-60min

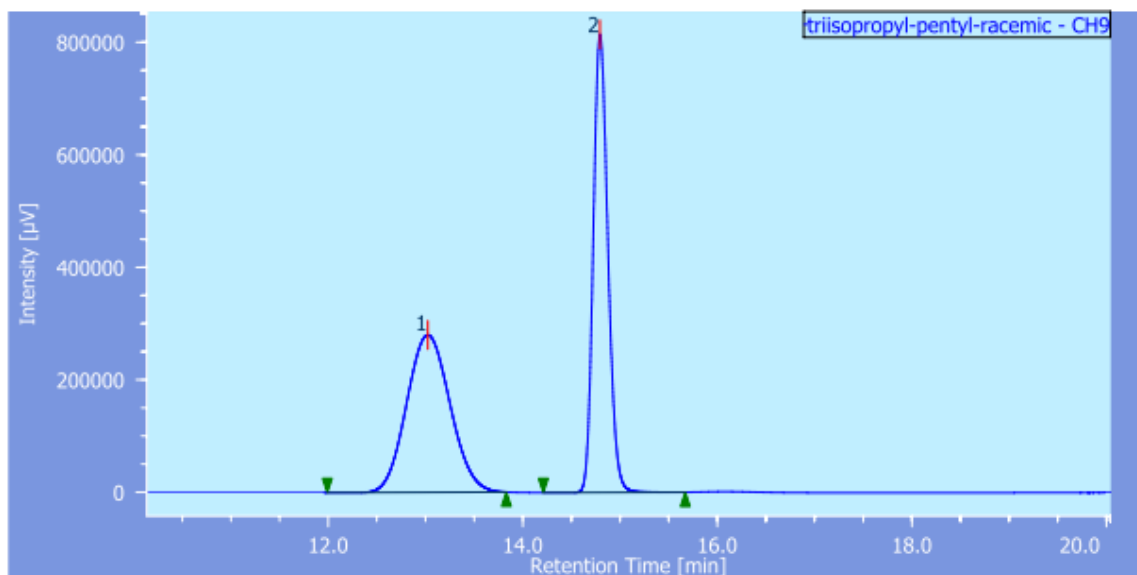
Channel Info

chromatogram name triisopropyl-pentyl-CH10

Peak Info

#	CH	tR [min]	Area [µV·sec]	Area (%)
1	10	13.018	1788833	2.642
2	10	14.533	65917844	97.358





Chromatogram Info

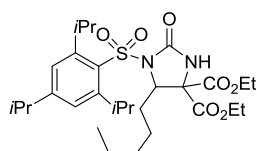
modification time 2016/08/30 17:34:56
 comment
 acquisition date 2014/04/18 17:35:27
 injection volume 5.00 [µL]
 sample# 1
 control method IC-95-1.0

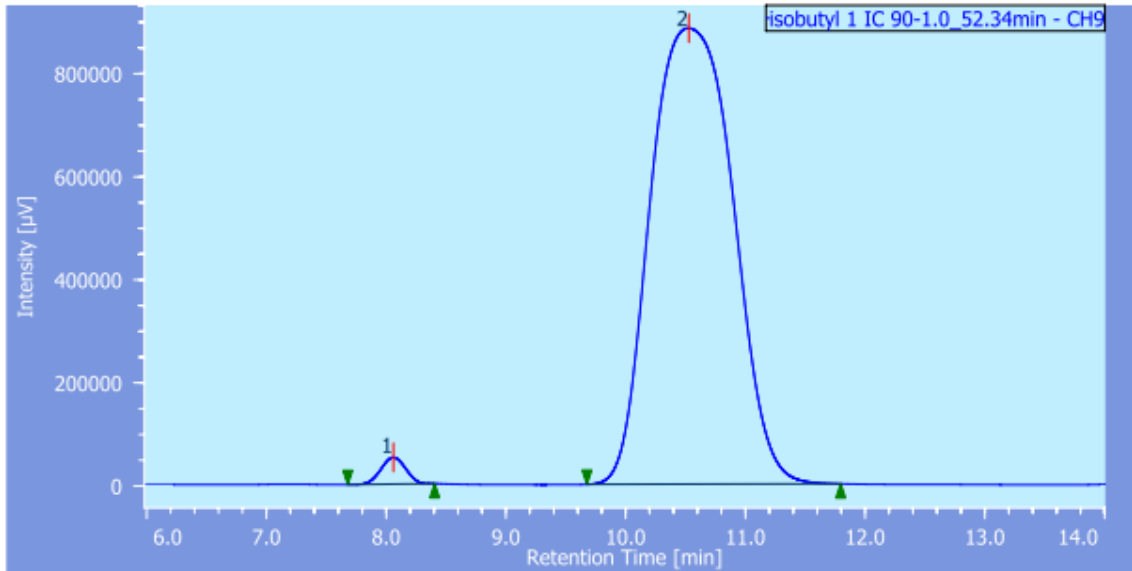
Channel Info

chromatogram name triisopropyl-pentyl-racemic-CH9

Peak Info

#	CH	tR [min]	Area [µV·sec]	Area (%)
1	9	13.023	8697180	50.480
2	9	14.793	8531944	49.520



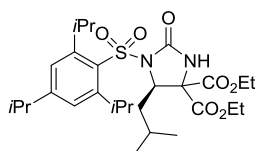


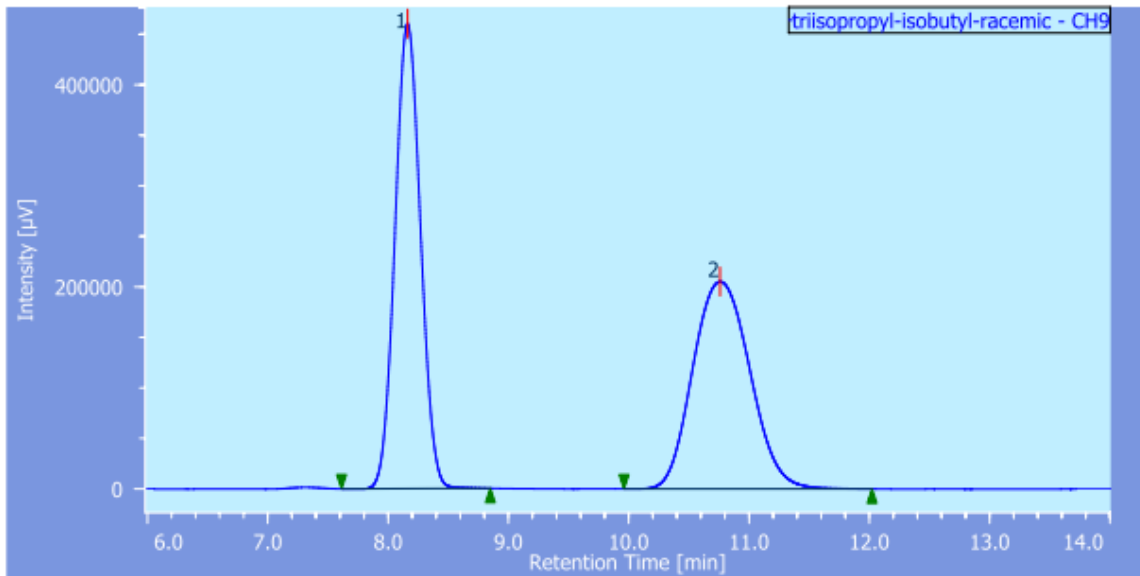
Chromatogram Info
 modification time 2014/04/18 21:59:27
 comment
 acquisition date 2014/04/18 21:22:06
 injection volume 5.00 [µL]
 sample# 3
 control method IC-90-1.0-60min

Channel Info
 chromatogram name isobutyl 1 IC 90-1.0_52.34min-CH9

Peak Info

#	CH	tR [min]	Area [µV·sec]	Area (%)
1	9	8.060	746947	1.726
2	9	10.527	42520964	98.274





Chromatogram Info

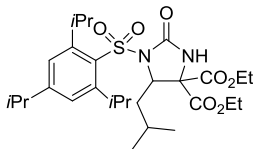
modification time 2016/08/30 17:36:30
 comment
 acquisition date 2014/04/18 16:58:05
 injection volume 5.00 [µL]
 sample# 2
 control method IC-90-1.0

Channel Info

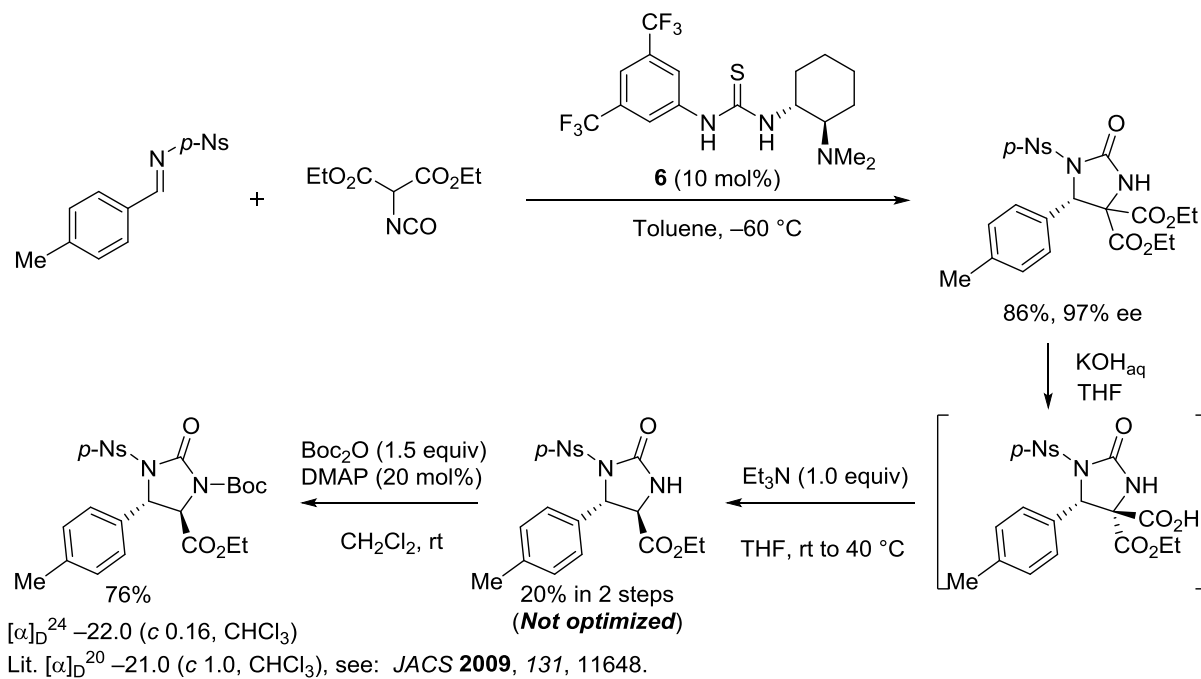
chromatogram name triisopropyl-isobutyl-racemic-CH9

Peak Info

#	CH	tR [min]	Area [µV·sec]	Area (%)
1	9	8.162	6793451	50.078
2	9	10.758	6772319	49.922



Determination of the Absolute Configuration of the Product



Scheme S1. Determination of the absolute configuration of the product.